

## Procedure 7.3 - Replacing the Lower PCA

### Removing the Lower PCA

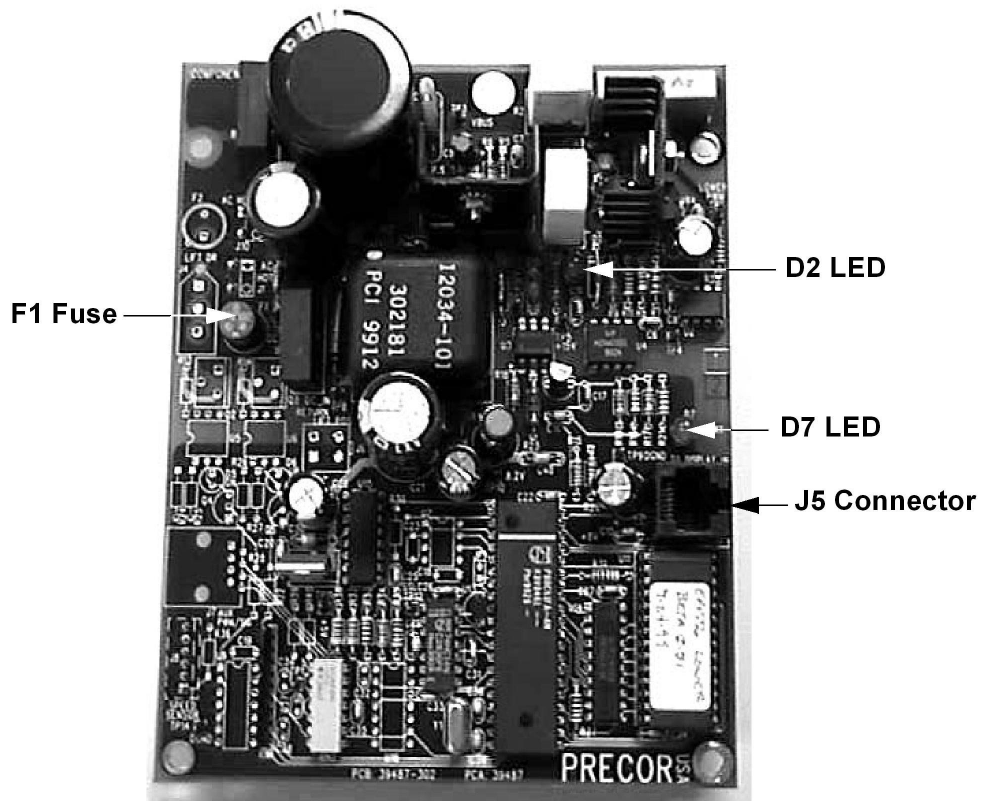
1. Set the on/off switch in the 'off' position.

#### WARNING

Before continuing with this procedure, review the Warning and Caution statements listed in Section One, Things You Should Know.

2. Remove the rear cover.
3. Attach the wrist strap to your arm, then connect the ground lead of the wrist strap to the EFX frame.
4. Remove the shield from the lower PCA.
5. Disconnect the cables from the lower PCA.
6. Remove the screws that secure the lower PCA.

### Diagram 7.3 - Lower PCA



## **Replacing the Lower PCA**

7. Position the replacement lower PCA at its mounting position.
8. Install the screws that secure the lower PCA.
9. Connect the cables you disconnected in Step 5.
10. Install the lower PCA shield.
11. Remove the ground lead of the wrist strap from the EFX frame, then remove the wrist strap from your arm.
12. Re-install the rear cover, then check the operation of the C556 as described in Section Four.